

# Installing Hortonworks Sandbox -- VirtualBox on Windows

---

## Getting Ready to install on a Mac using Oracle Virtual Box

Use this section to prepare for your installation.

### Prerequisites

To use the Hortonworks Sandbox on a Mac you must have the following resources available to you:

- Hosts:
  - A 64-bit machine with a chip that supports virtualization. Any Mac that can run Lion is a 64-bit machine.
  - A BIOS that has been set to enable virtualization support. Any Mac that can run Lion has been set to enable virtualization.
- Host Operating Systems:
  - Mac OS X, Lion or later
- At least 4 GB of RAM
- Virtual Machine Environments:
  - Oracle [Virtual Box version 4.2](#) or later
- The correct virtual appliance file for your environment. Download them from <http://hortonworks.com/products/sandbox-instructions/>. You will need to login to your free Hortonworks account to download the file.

### Virtual Machine Overview

The Hortonworks Sandbox is delivered as a virtual appliance that is a bundled set of operating system, configuration settings, and applications that work together as a unit. The virtual appliance (indicated by an .ovf or .ova extension in the filename) runs in the context of a virtual machine (VM), a piece of software that appears to be an application to the underlying (host) operating system, but that looks like a bare machine, including CPU, storage, network adapters, and so forth, to the operating system and applications that run on it.

To run the Sandbox you must install one of the supported virtual machine environments on your host machine, either Oracle Virtual Box or VMware Fusion (Mac) or Player (Windows/Linux).

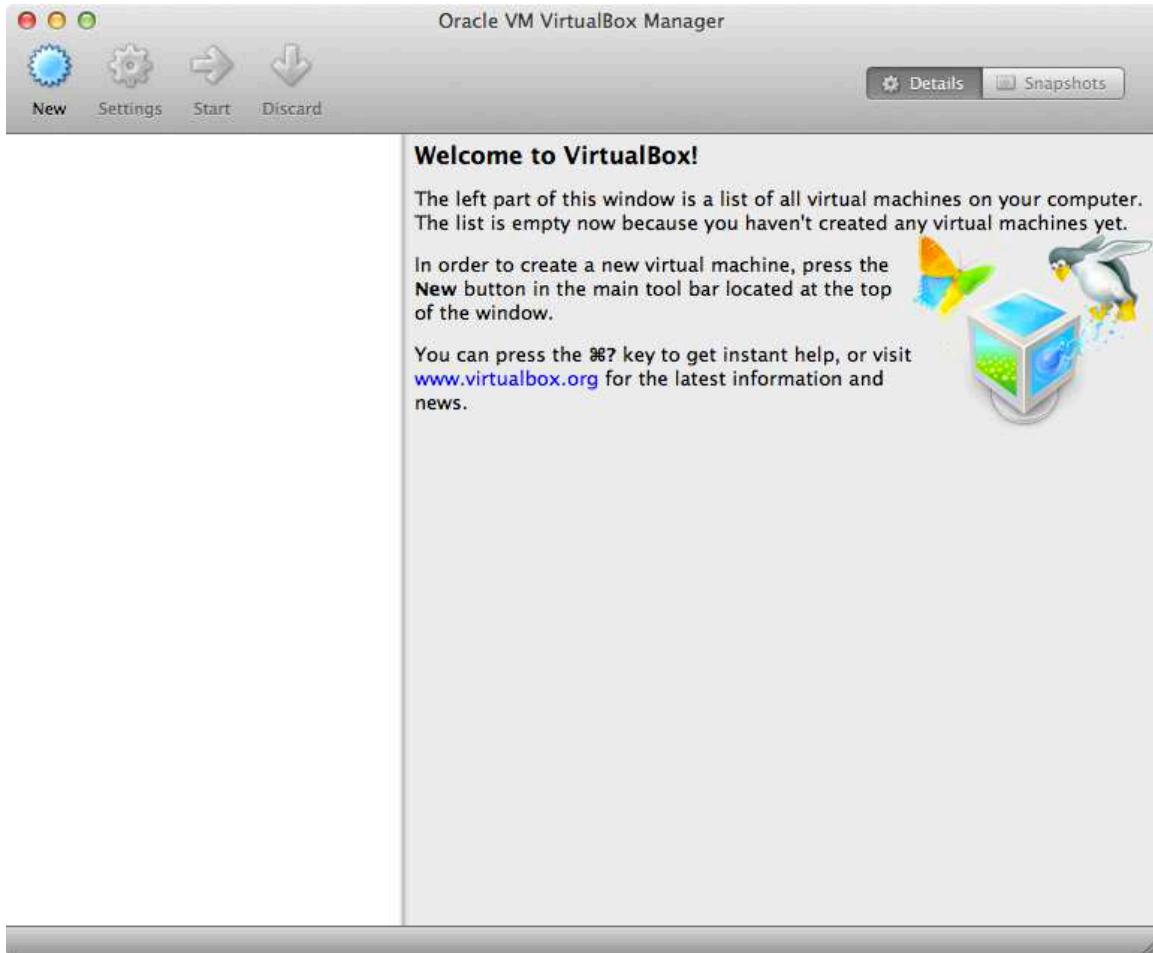
In general, the default settings for the environments are fine. The one item that you may need to set up is the Network Adapter. To use the Sandbox, you should have a Host-only network adapter with DHCP enabled. This ensures that the host machine and the virtual machine can talk to each other, which is necessary for the Sandbox to work. Setting up this adapter is covered in the detailed installation instructions.

## Installing on Windows using Oracle Virtual Box

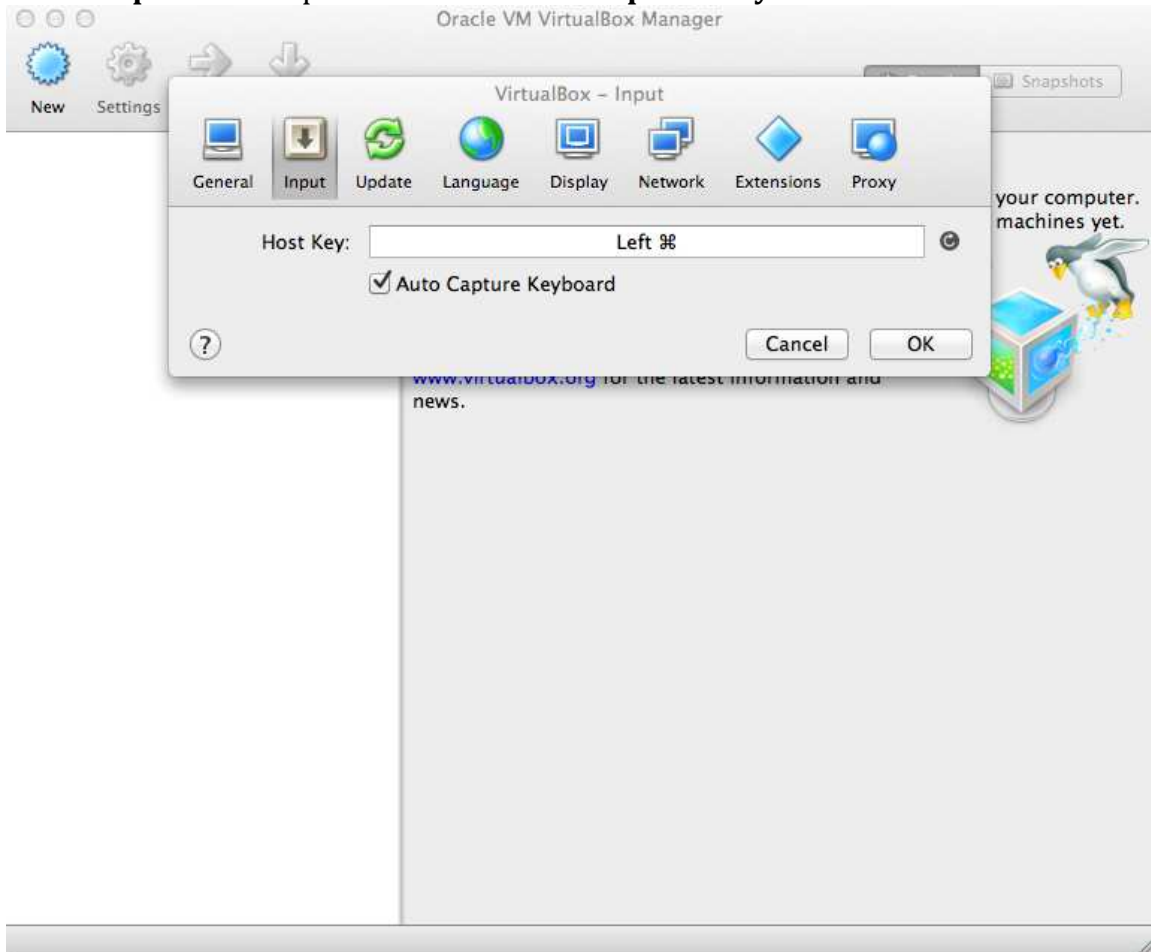
1. Open the Oracle VM VirtualBox Manager  
Double click:



2. The **Oracle VM Virtualization Manager** window opens.



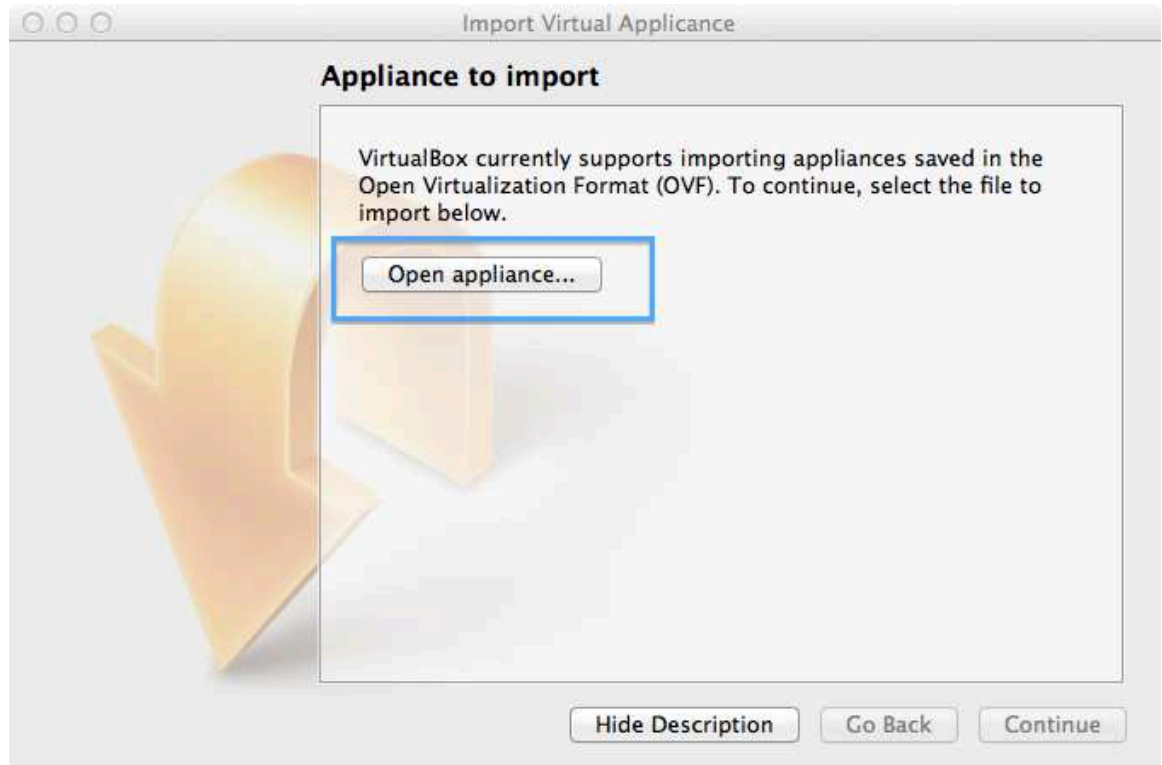
3. Change the Auto-Capture preference. **VirtualBox->Preferences** and select **Input** in the top bar. Uncheck **Auto-Capture Keyboard**.



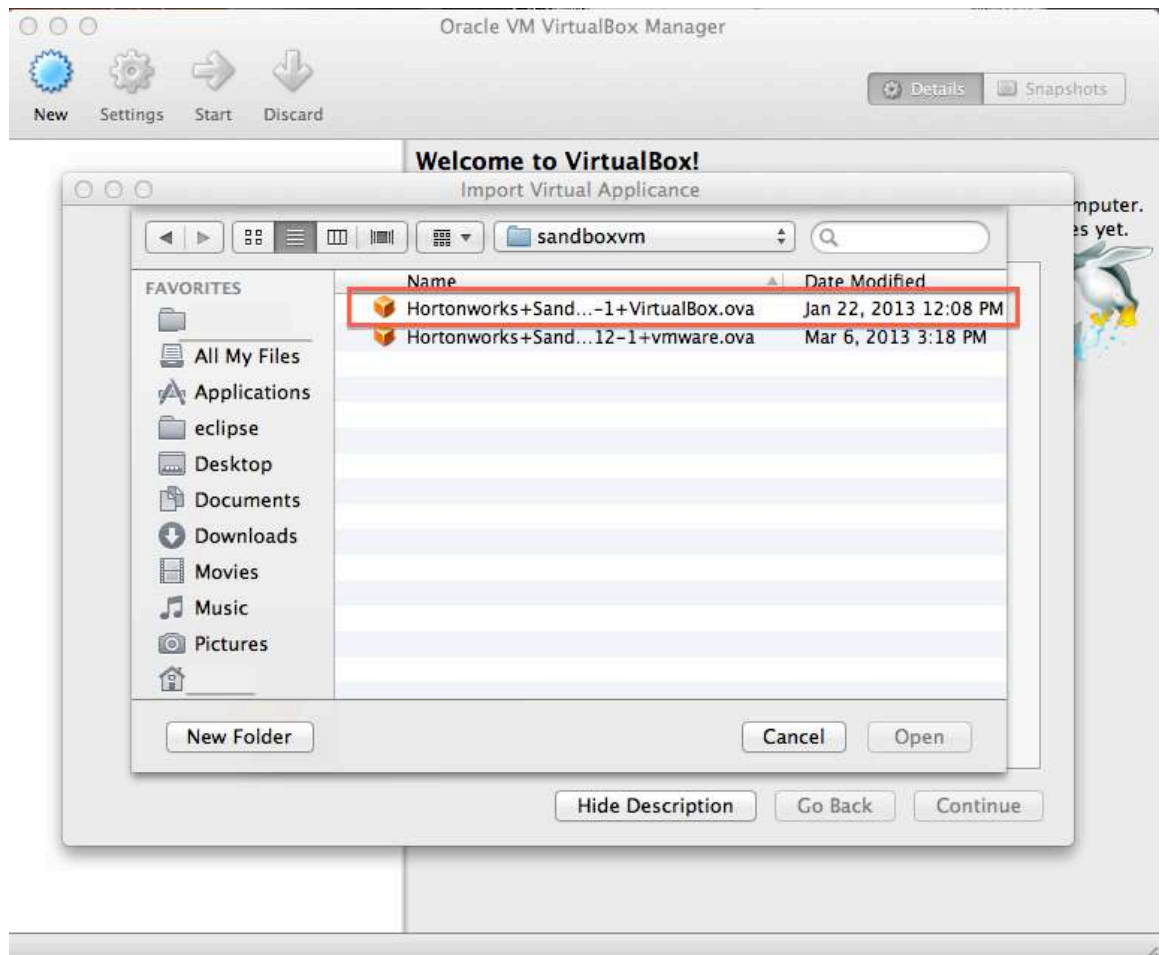
4. Import the Sandbox appliance file: **File->Import Appliance**



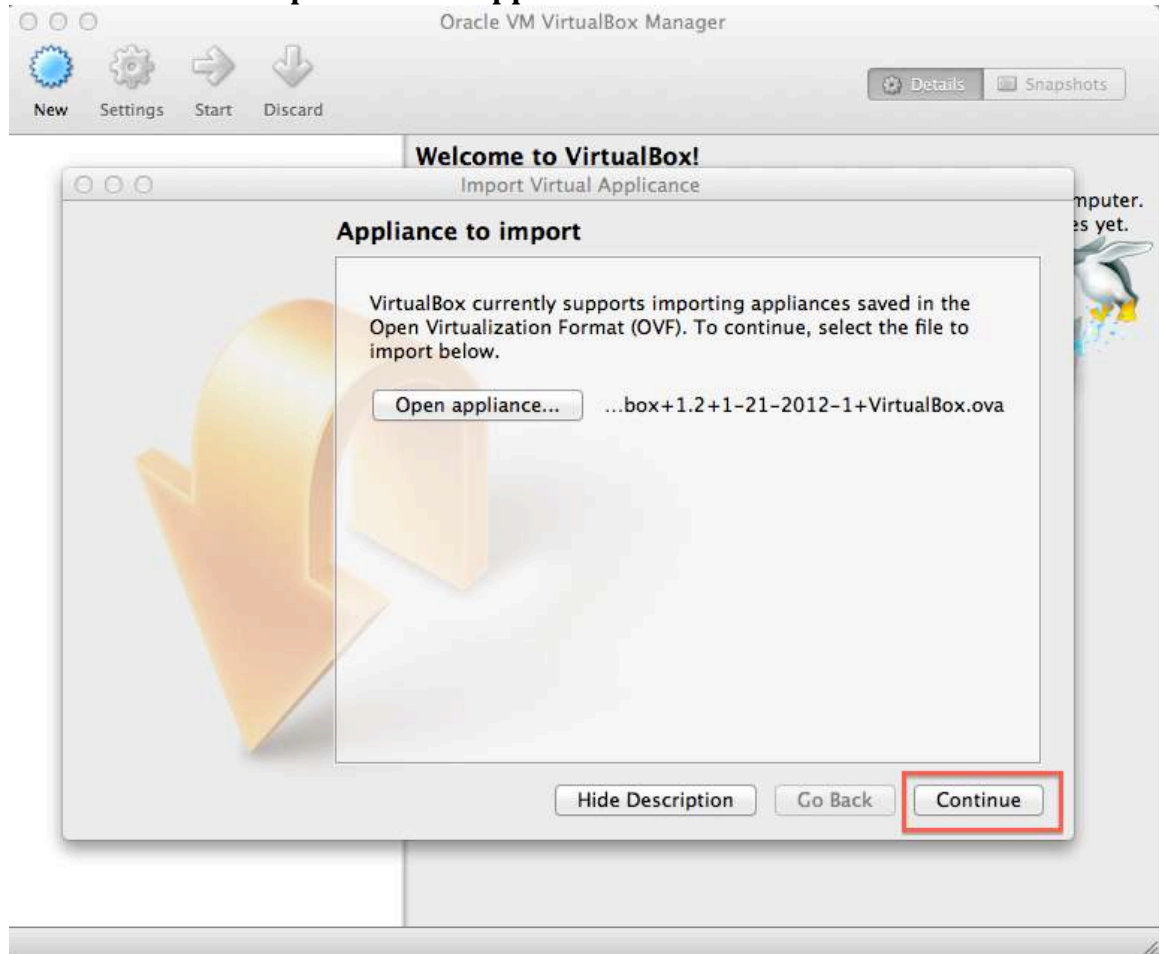
6. The **Import Virtual Appliance** screen opens.



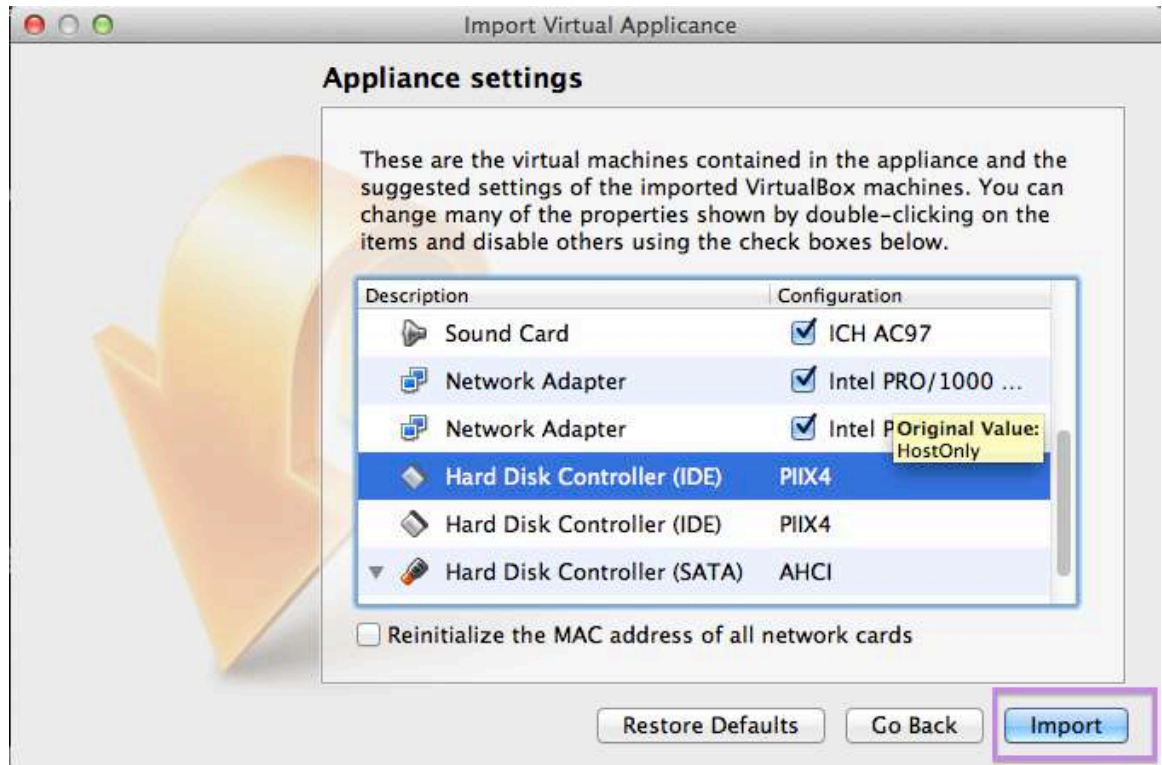
7. Click the **Open appliance** button; the file browser opens. Make sure you select the correct appliance. In this case, the top file is the VirtualBox formatted file. Click the **Open** button.



8. You return to the **Import Virtual Appliance** screen. Click **Continue**.



9. The **Appliance settings** screen appears. You can check here to see if a **Host-Only Network Adapter** already exists. Hover your mouse over the entry to check its value. If Host-only does not exist, you can add it later. Click **Import**.

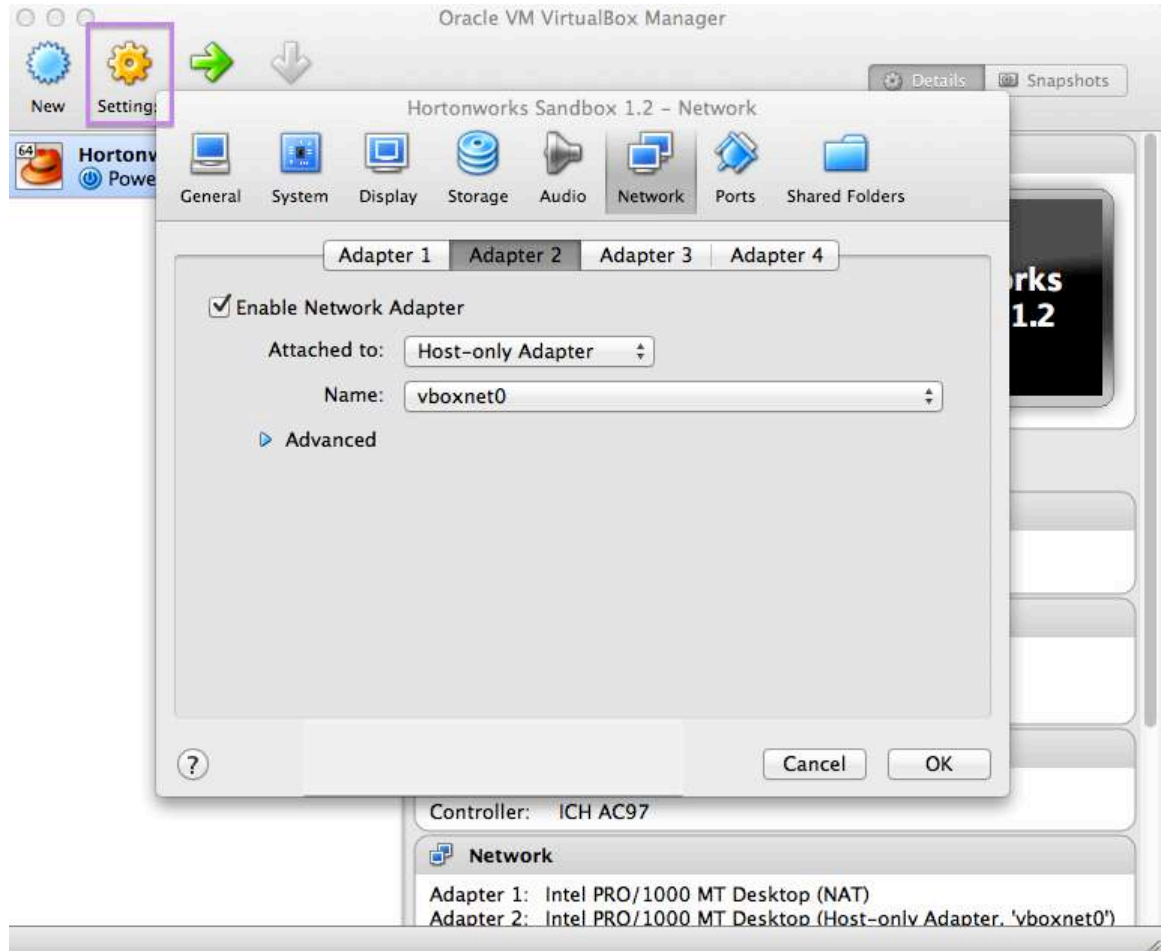


10. The appliance is imported.

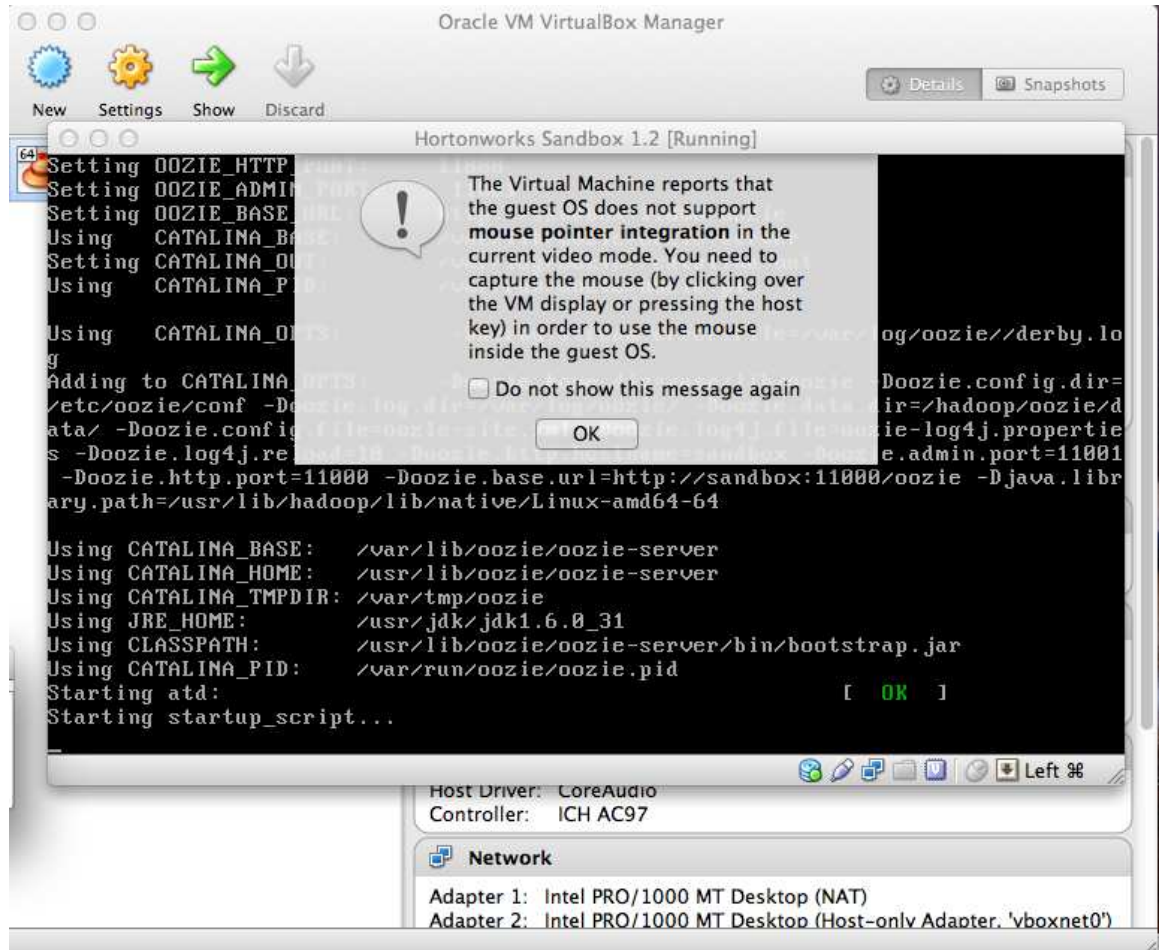




11. If you need to add a Host-only adapter, click **Settings** in the main Manager window. The appliance **Settings** window opens. Select **Network** in the top nav bar. Check **Enable Network Adapter** and use the **Attached to:** dropdown to select **Host-only Adapter**. Click **OK**.

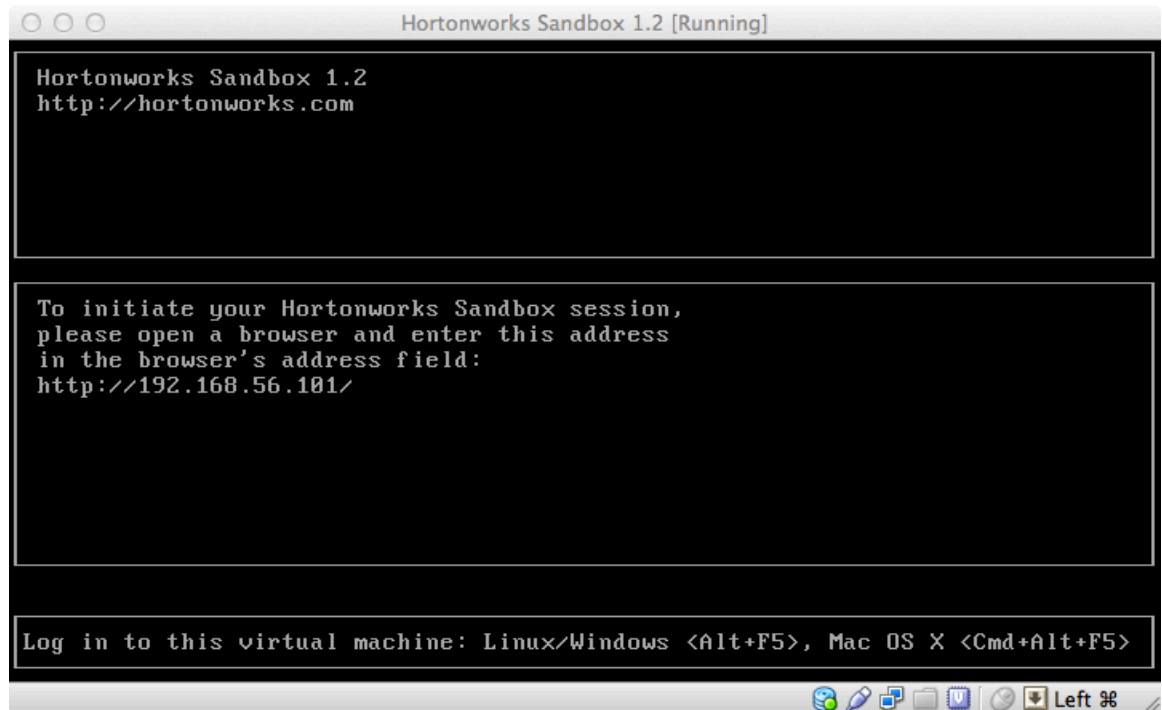


- Turn on the Sandbox. Select the appliance and click the green **Start** arrow. A console window opens and displays an information screen. Click OK to clear the info screen.

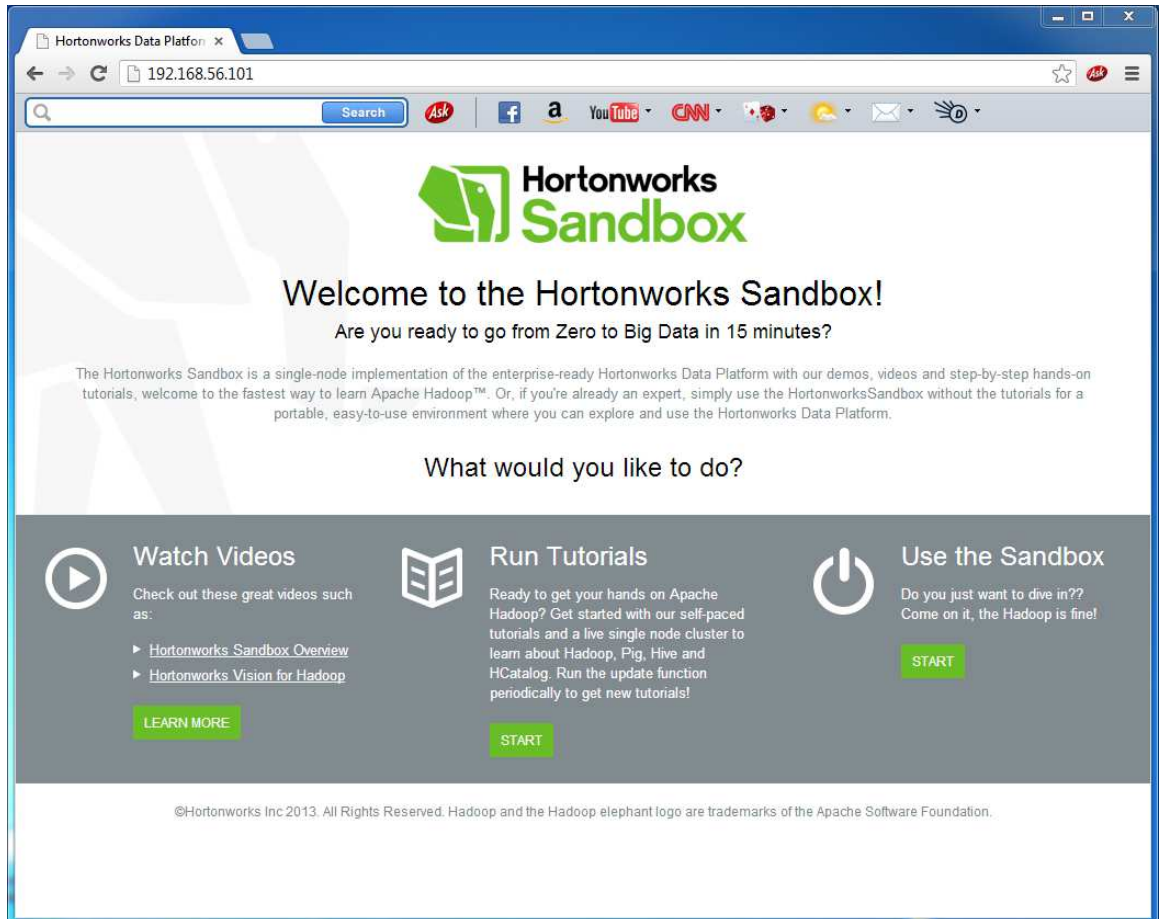


Because what is being displayed is a conceptually separate machine, control of the mouse and the keyboard must be passed back and forth between the host and the VM. This is particularly useful when the VM has a GUI. In the case of the Sandbox appliance, however, you never need to use your keyboard or your mouse inside the Sandbox console window. If you accidentally let the console “capture” your mouse or keyboard, you can release them back to the host machine by pressing the **Left Command** key. There’s a prompt in the lower right corner of the console window if you forget. Click **OK**.

13. Wait while the VM boots up. When the process is complete, the console displays the login instructions for the Sandbox.



14. Use a browser on your host machine to open the URL displayed on the console.



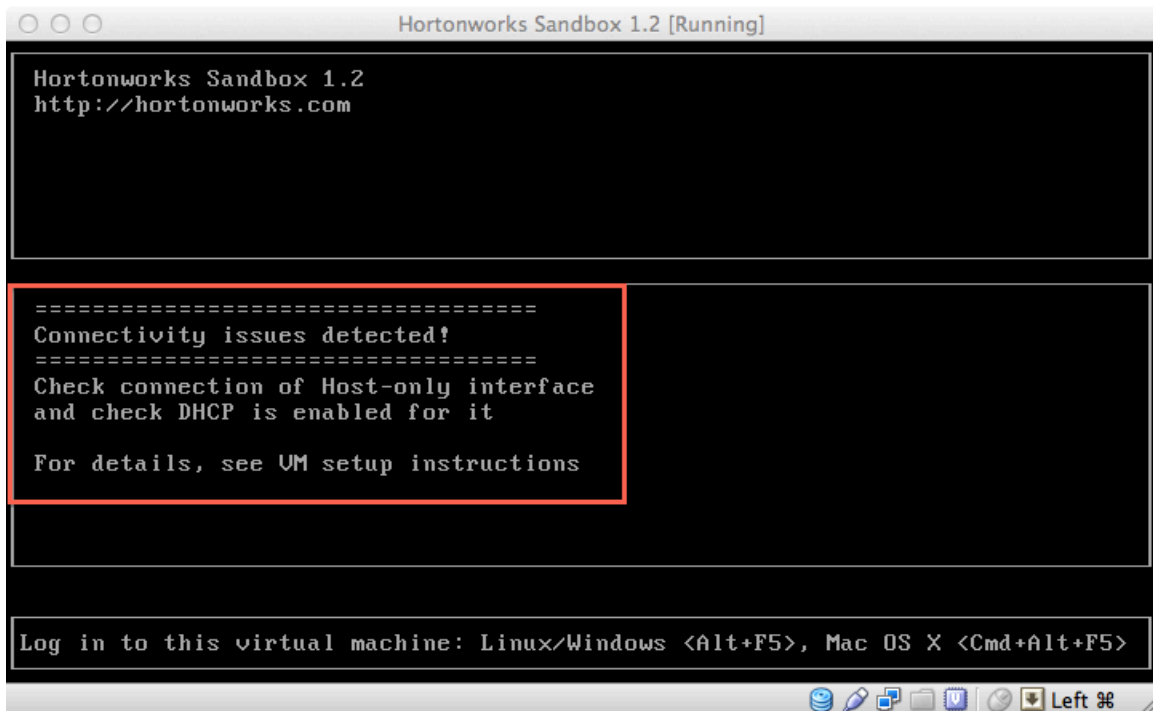
The Sandbox GUI is displayed. Enjoy.

## Troubleshooting

Use the following to help you troubleshoot problems with your installation.

### Problem: DHCP not or incorrectly set on Host-Only interface

Unpredictably the DHCP settings of the Host-Only interface may not be set correctly. When you attempt to boot up your Sandbox, you get a message like this:



```
Hortonworks Sandbox 1.2 [Running]
Hortonworks Sandbox 1.2
http://hortonworks.com

=====
Connectivity issues detected!
=====
Check connection of Host-only interface
and check DHCP is enabled for it

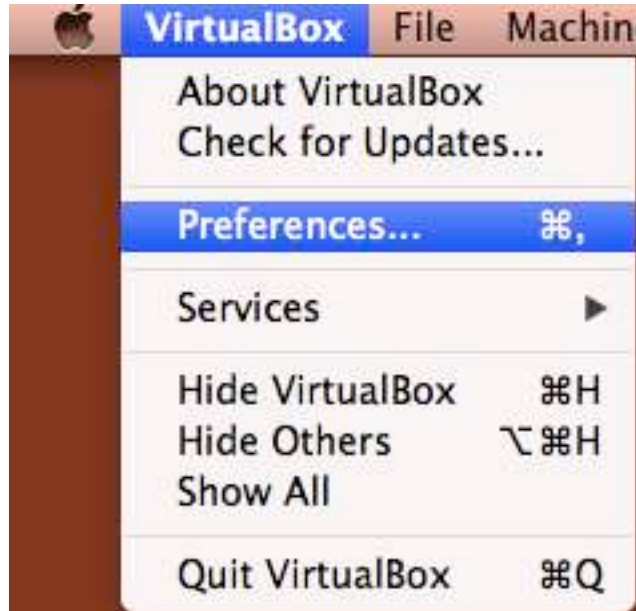
For details, see VM setup instructions

Log in to this virtual machine: Linux/Windows <Alt+F5>, Mac OS X <Cmd+Alt+F5>
```

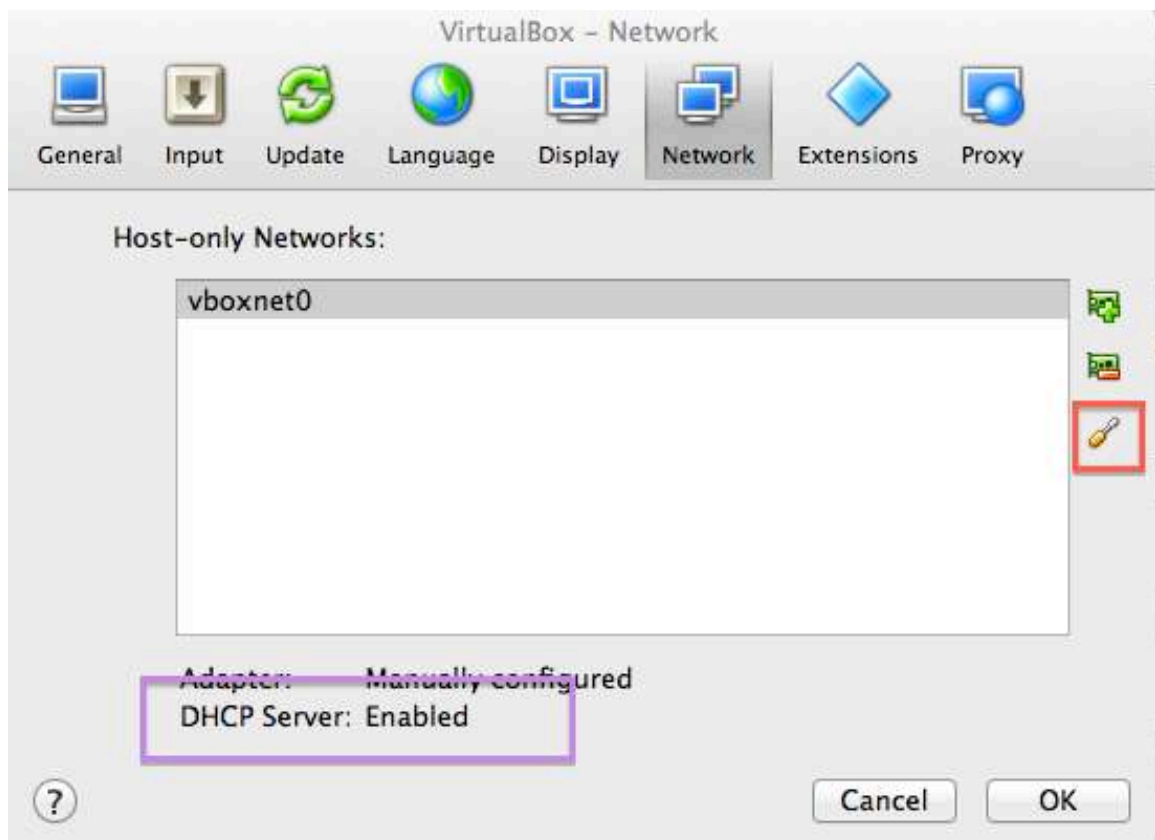
### Solution: Set up DHCP manually.

To solve this issue, you must set up the DHCP server manually.

1. Open the global Preferences for VirtualBox: **VirtualBox->Preferences**



2. Select **Network** from the top bar. See if **DHCP Server** is shown as **Enabled**. Click the Settings screwdriver, shown boxed in red.



3. Select **DHCP Server**. Make sure **Enable Server** is checked and make sure the IP address values are as shown in the screenshot. Make whatever changes you need to make and OK out.

