

Installing Hortonworks Sandbox – VMWare Player on Windows

Getting Ready to install on Windows using VMware Player

Use this section to prepare for your installation.

Prerequisites

To use the Hortonworks Sandbox on Windows, you must have the following resources available to you:

- Hosts:
 - A 64-bit machine with a chip that supports virtualization. Not all 64-bit chips have this capability. Check with your system documentation or your IT department. For more information, see this Microsoft article: <http://windows.microsoft.com/en-us/windows7/32-bit-and-64-bit-windows-frequently-asked-questions>
 - A BIOS that has been set to enable virtualization support. This is usually already set, but in some cases must be set manually. Check with your system documentation or your IT department. For more information, see this Microsoft article: <http://www.microsoft.com/windows/virtual-pc/support/configure-bios.aspx>
- Host Operating Systems:
 - Windows 7
- At least 4 GB of RAM
- Virtual Machine Environments:
 - VMware
 - For Windows/Linux: [VMware Player 5.0](#) or later
- The correct virtual appliance file for your environment. Download them from <http://hortonworks.com/products/sandbox-instructions/>. You will need to login to your free Hortonworks account to download the file.

Virtual Machine Overview

The Hortonworks HDP Sandbox is delivered as a virtual appliance, that is a bundled set of operating system, configuration settings, and applications that work together as a unit. The virtual appliance (indicated by an .ovf or .ova extension in the filename) runs in the context of a virtual machine (VM), a piece of software that appears to be an application to the underlying (host) operating system, but that looks like a bare machine, including CPU, storage, network adapters, and so forth, to the operating system and applications that run on it.

To run the Sandbox you must install one of the supported virtual machine environments on your host machine, either Oracle Virtual Box or VMware Fusion (Mac) or Player (Windows/Linux).

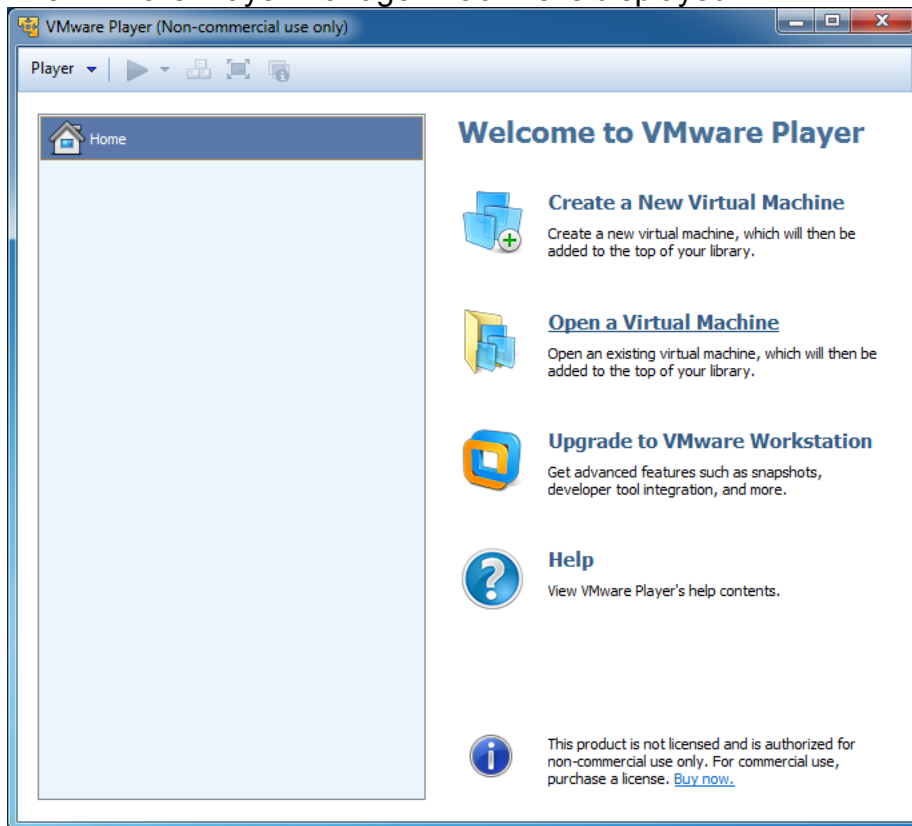
In general, the default settings for the environments are fine.

Installing on Windows using VMware Player

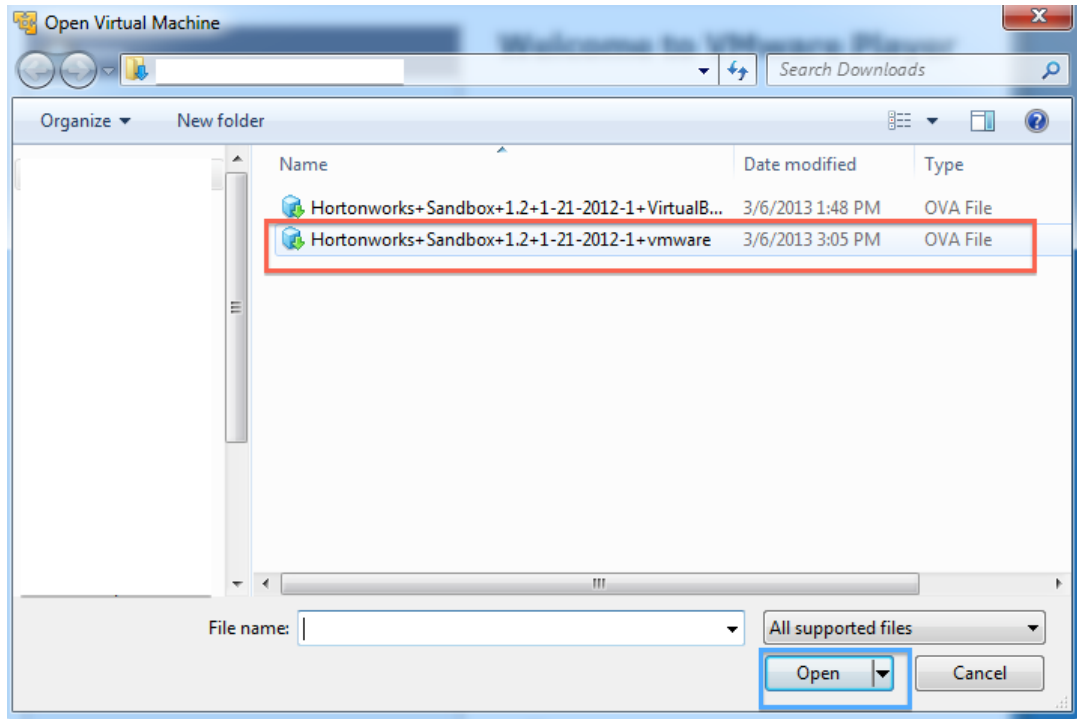
1. Open VMware Player.
Double click:



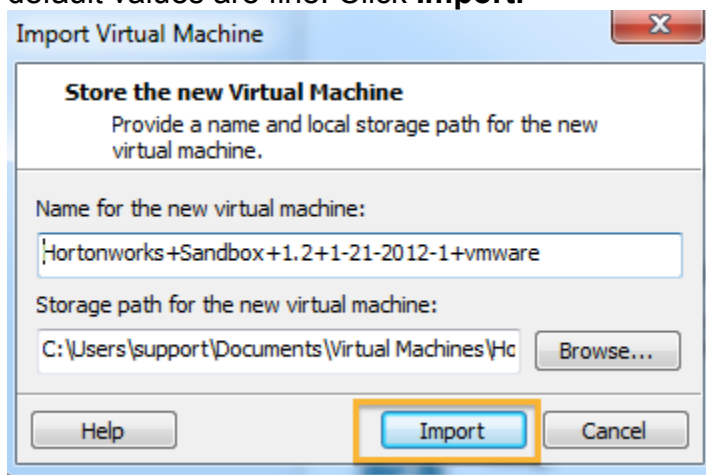
2. The VMware Player manager machine is displayed.



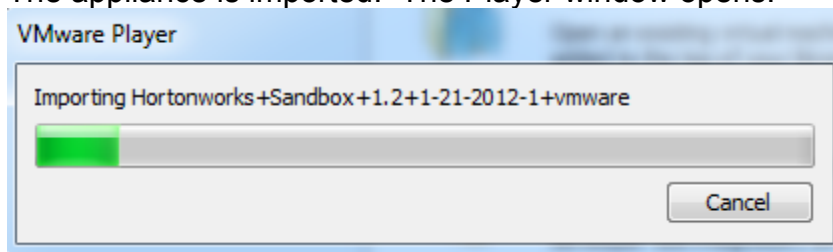
3. Click Open a Virtual Machine. The file browser opens. Select the appropriate Sandbox appliance file. Click **Ope**



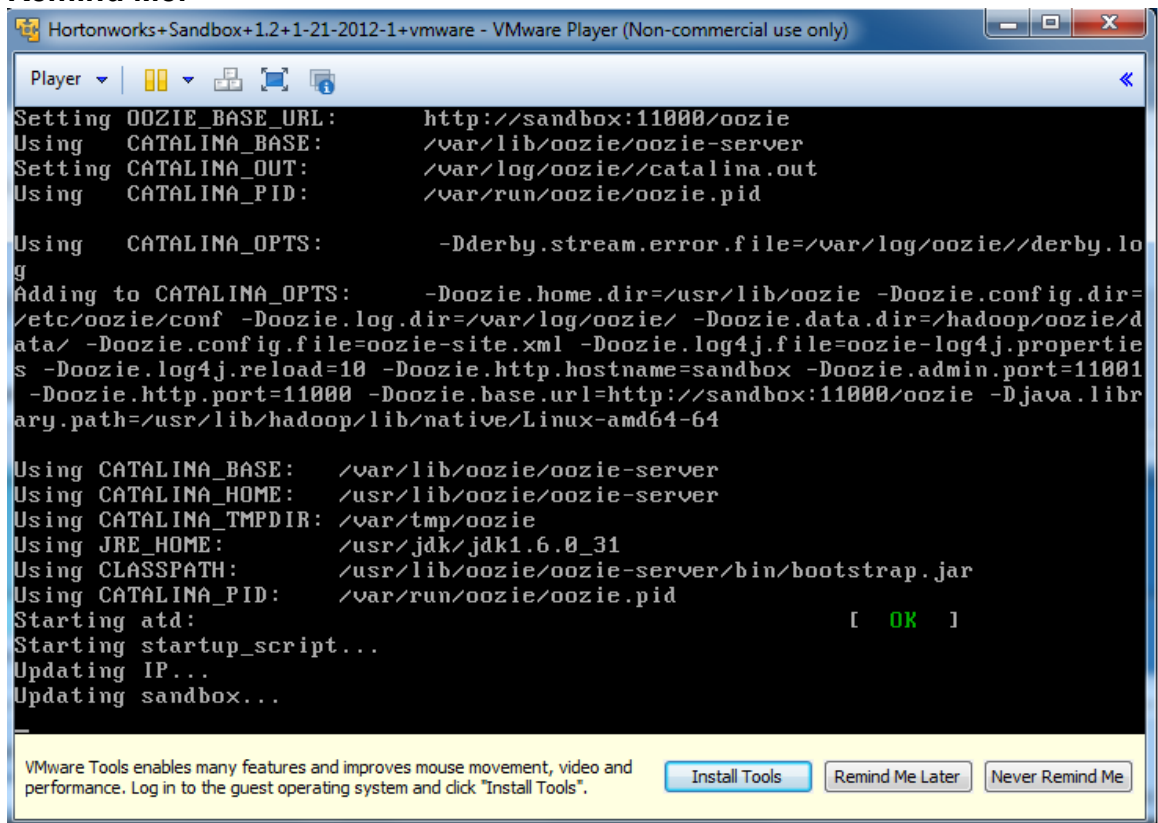
4. **Import Virtual Machine** opens. Unless you have specific needs, the default values are fine. Click **Import**.



5. The appliance is imported. The Player window opens.

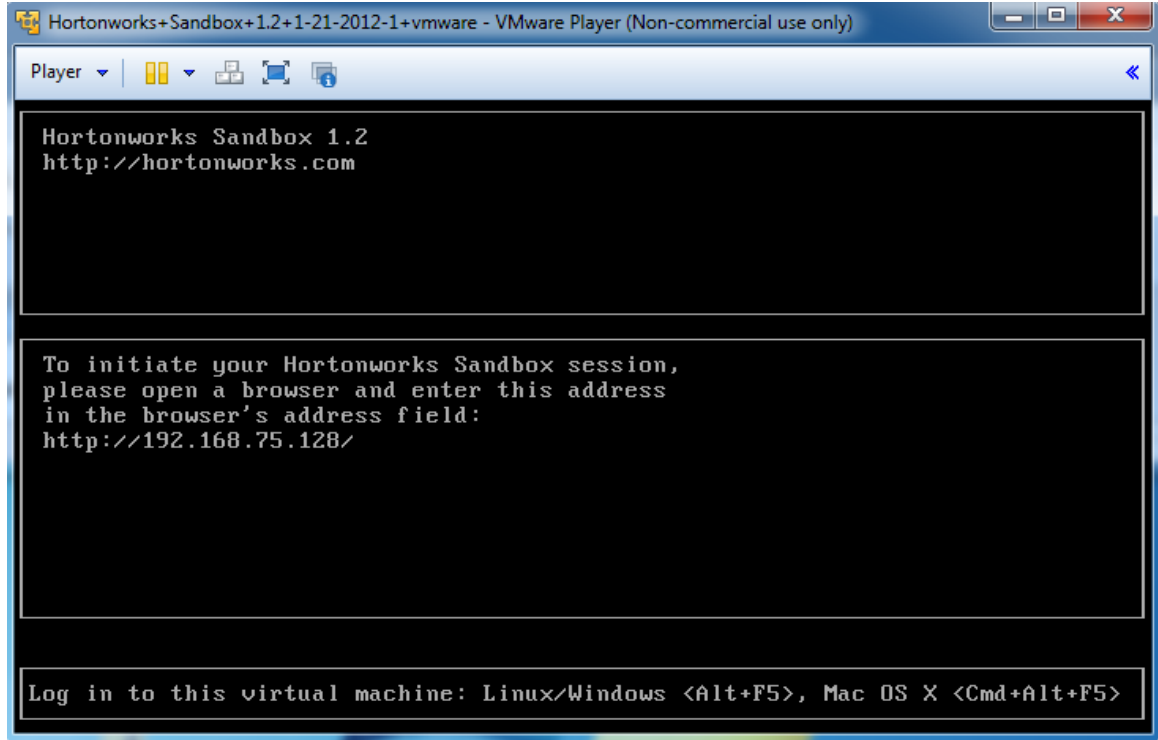


6. At the **Player** window, click **Play virtual machine**. A console window opens. Click **OK** when you see the **Removable Devices** information window to clear it. The Sandbox boots up..
7. A panel appears on the console window and asks if you want to install VMware Tools. While this toolkit is very useful for generic work with VMs, it isn't necessary to install it for the Sandbox appliance. Click **Never Remind Me**.

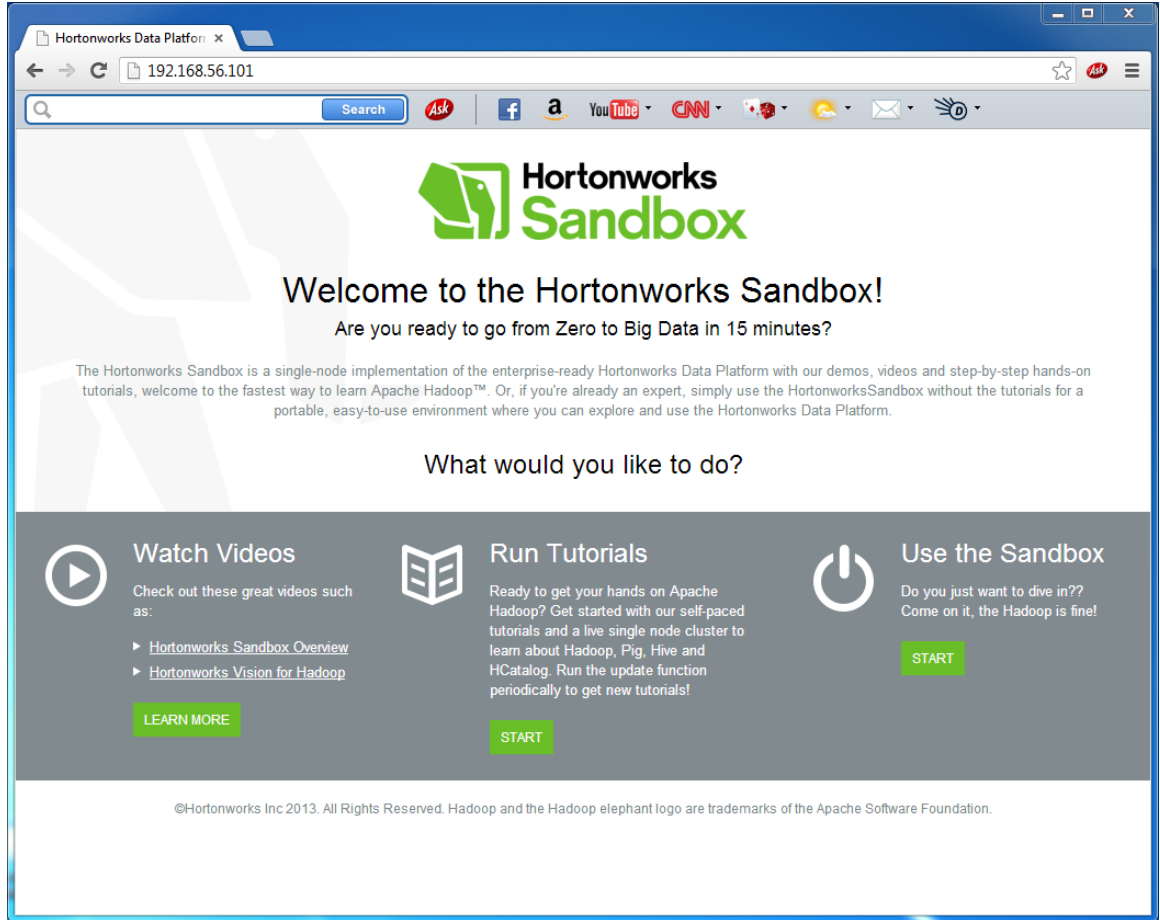


Because what is being displayed is a conceptually separate machine, control of the mouse and the keyboard must be passed back and forth between the host and the VM. This is particularly useful when the VM has a GUI. In the case of the Sandbox appliance, however, you never need to use your keyboard or your mouse inside the Sandbox console window. If you accidentally let the console “capture” your mouse or keyboard, you can release them back to the host machine by pressing the **Ctrl** and **Alt** keys.

9. When the Sandbox has finished starting up, the console displays the login instructions for the Sandbox.



11. Use a browser on your host machine to open the URL displayed on the console.



The Sandbox GUI is displayed. Enjoy.